



South Kent

ENERGY PARK

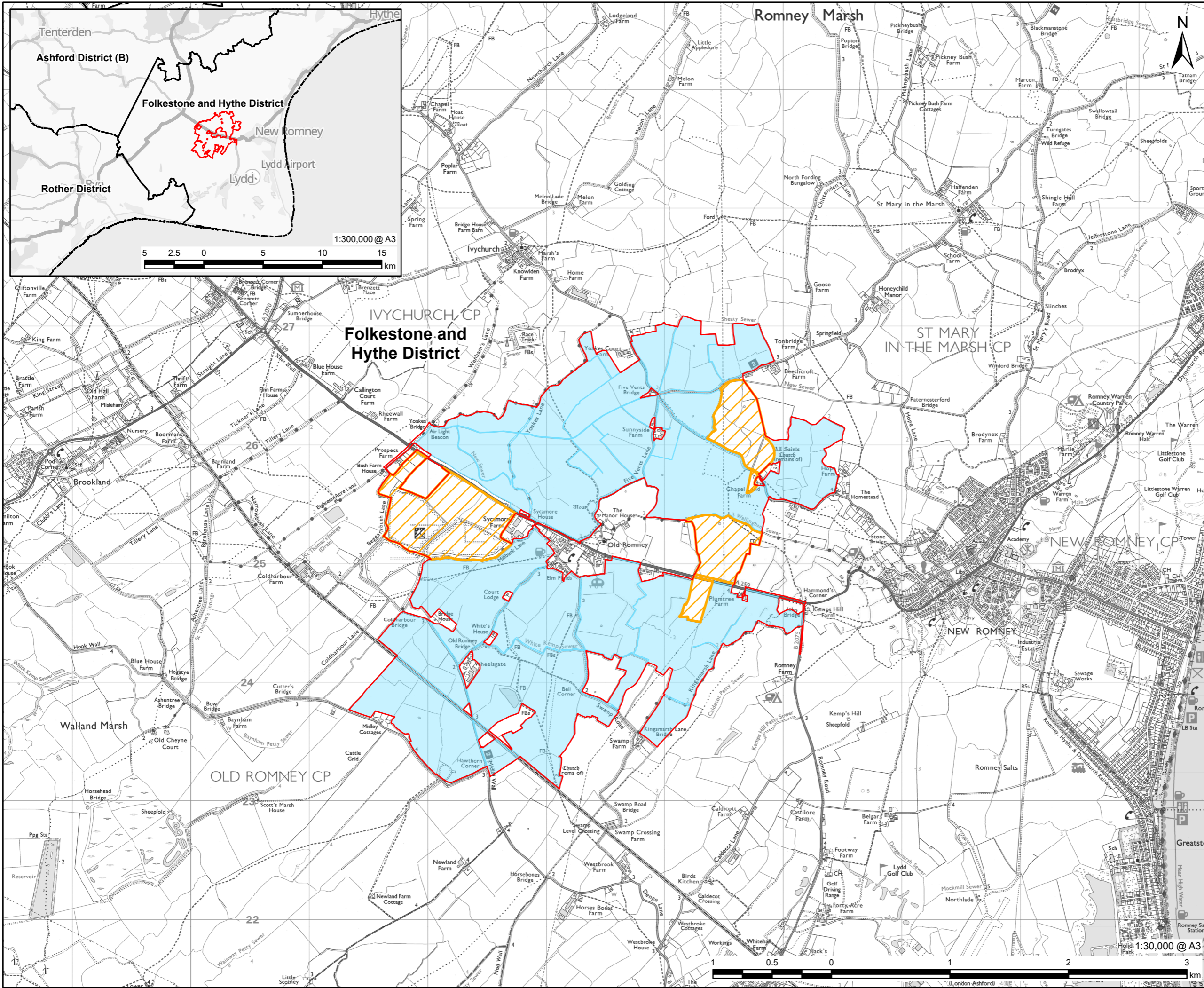
Planning Inspectorate Reference: EN0110035

Environmental Impact Assessment Scoping Report - Figures
June 2026



Table of Contents

PART 1	
Figure 1-1	Proposed Development Location Plan
Figure 2-1	Environmental Constraints
Figure 3-1	DCO Site Boundary and Land Use
Figure 6-1	DCO Solar Projects within 5 km of the Proposed Development
PART 2	
Figure 8-1	Designated Heritage Assets
Figure 8-2	Non-Designated Heritage Assets
PART 3	
Figure 9-1	Sites statutorily designated for their biodiversity value at an International (European) level up to 30 km from the DCO Site Boundary
Figure 9-2	Sites statutorily designated for their biodiversity value at a National or local level within 5 km of the DCO Site Boundary
Figure 9-3	Location of non-statutorily designated sites and priority habitats within 2 km of the DCO Site Boundary
Figure 9-4	Habitats within the DCO Site Boundary
PART 4	
Figure 10-1	Surface Water Features and their Attributes
Figure 10-2	Bedrock Aquifers
Figure 10-3	Groundwater Features and their Attributes
Figure 10-4	Fluvial and Tidal Flood Risk
Figure 10-5	Surface Water Flood Risk
PART 5	
Figure 11-1	Landscape and Visual Study Area
Figure 11-2	Zone of Theoretical Visibility (ZTV) DCO Site Boundary, North – Bare Earth
Figure 11-3	ZTV DCO Site Boundary, South – Bare Earth
Figure 12-1	Noise and Vibration Study Areas and Noise Monitoring Locations
Figure 13-1	Study Area for Socio-Economic Impacts
PART 6	
Figure 14-1	Predictive Agricultural Land Classification (ALC)
Figure 14-2	Soil Associations
Figure 15-1	Transport and Access Study Area
Figure 15-2	Existing Walking and Cycling Network
Figure 15-3	Bus Stops and Routes
Figure 15-4	Railway Stations
Figure 15-5	Traffic Survey Locations
Figure 17-1	Air Quality Study Area for South Kent Energy Park
Figure 17-2	Ground Conditions Study Area Boundaries



PROJECT



CLIENT



CONSULTANT

AECOM Limited
3 Rivergate
Bristol, BS1 6EW
www.aecom.com

LEGEND

- DCO Site Boundary
- Main Site
- Interconnecting Areas
- District Boundary

NOTES

© Crown copyright and database rights 2025
Ordnance Survey AC0000808122.
Contains OS data © Crown Copyright and
database right 2025.
Contains OS data © Crown Copyright and
database right 2026. Contains data from OS
Zoomstack.

ISSUE PURPOSE

Scoping Report

PROJECT NUMBER

60716220

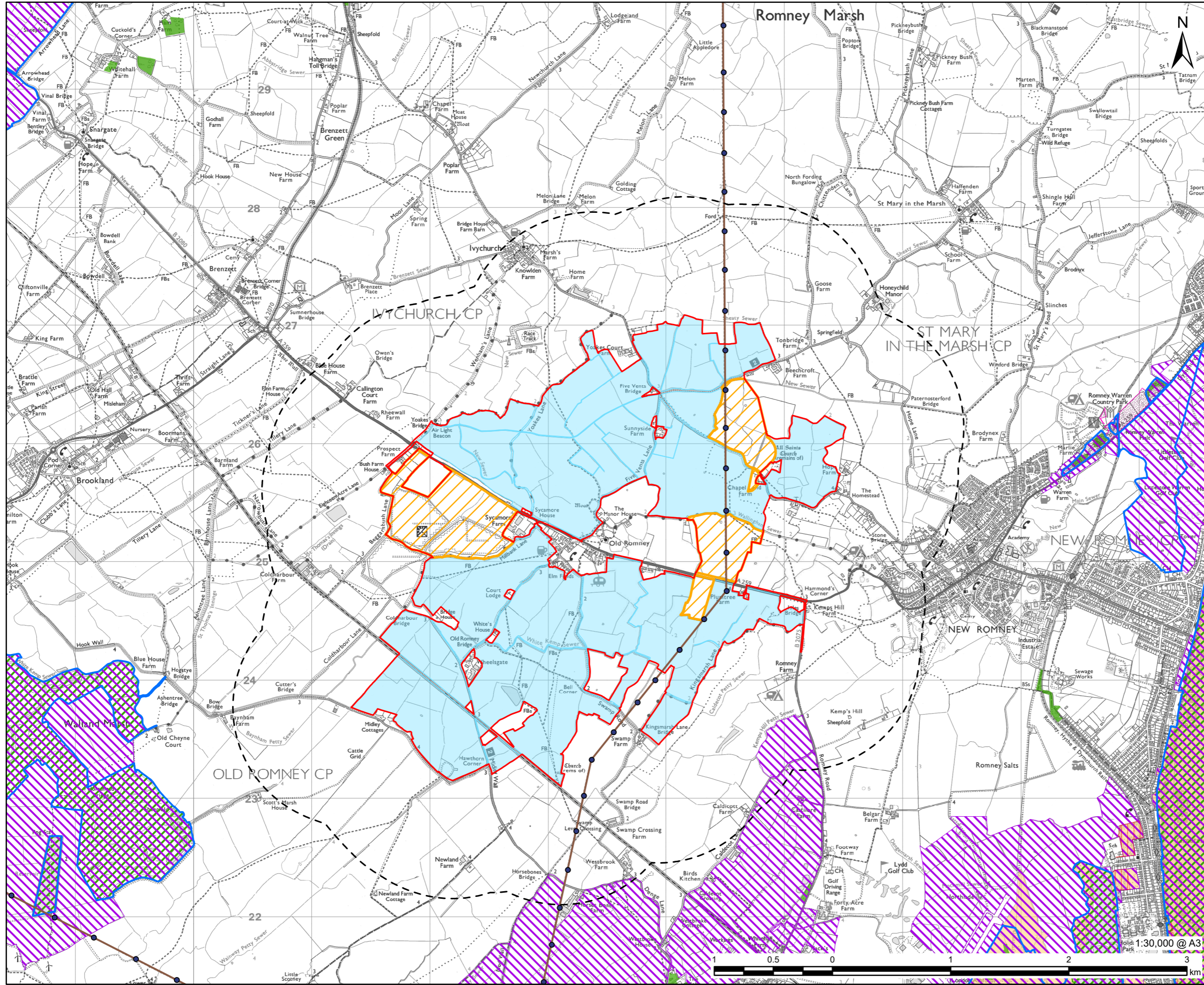
FIGURE TITLE

Proposed Development Location Plan

FIGURE NUMBER

Figure 1-1

This drawing has been prepared for the use of AECOM's client. It may not be used, modified, reproduced or relied upon by third parties, except as agreed by AECOM or as required by law. AECOM accepts no responsibility, and denies any liability whatsoever, to any party that uses or relies on this drawing without AECOM's express written consent. Do not scale this document. All measurements must be obtained from the stated dimensions.



PROJECT



CONSULTANT
 AECOM Limited
 3 Rivergate
 Bristol, BS1 6EW
 www.aecom.com

LEGEND

- DCO Site Boundary
- Main Site
- Interconnecting Areas
- 1km Buffer of DCO Site Boundary
- National Grid Tower
- National Grid Overhead Line
- Ramsar Sites
- Local Nature Reserve (LNR)¹
- National Nature Reserve (NNR)
- Site of Special Scientific Interest (SSSI)
- Special Protection Area (SPA)
- Special Area of Conservation (SAC)
- National Forest Inventory 2022: Woodland

NOTES

1. This national dataset is "indicative" not "definitive". Definitive information can only be provided by individual local authorities and you should refer directly to their information for all purposes that require the most up to date and complete dataset.
- © Crown copyright and database rights 2025 Ordnance Survey AC0000808122.
- © National Grid UK. Contains public sector information licensed under the Open Government Licence v3.3.
- © Natural England copyright. Contains Ordnance Survey data © Crown copyright and database right 2025.
- Contains, or is based on, information supplied by the Forestry Commission. © Crown copyright and database right 2022 Ordnance Survey [AC0000814847].

ISSUE PURPOSE

Scoping Report

PROJECT NUMBER

60716220

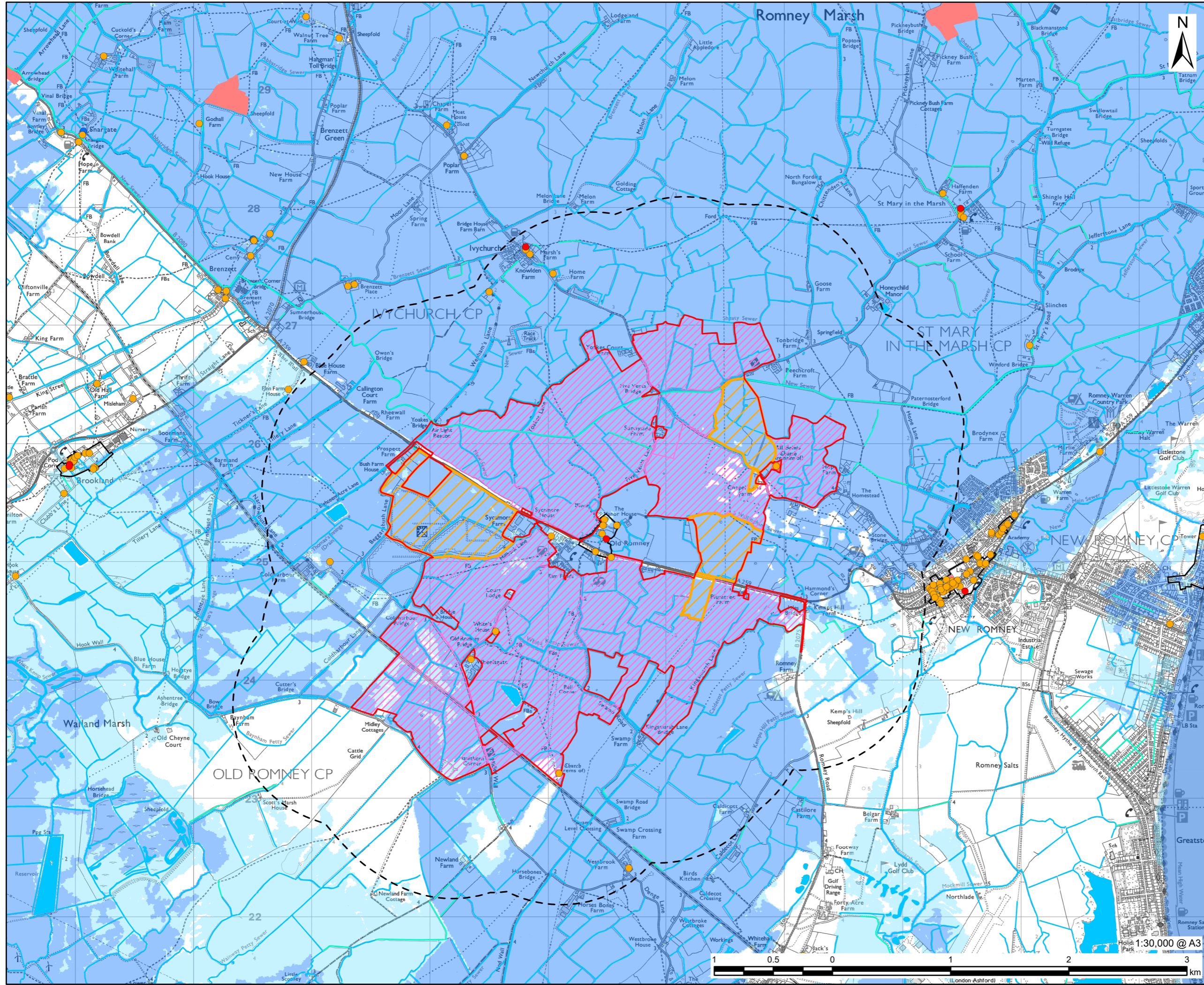
FIGURE TITLE

Environmental Constraints
 Sheet 1 of 2

FIGURE NUMBER

Figure 2-1

This drawing has been prepared for the use of AECOM's client. It may not be used, modified, reproduced or relied upon by third parties, except as agreed by AECOM or as required by law. AECOM accepts no responsibility, and denies any liability whatsoever, to any party that uses or relies on this drawing without AECOM's express written consent. Do not scale this document. All measurements must be obtained from the stated dimensions.



PROJECT



CLIENT



CONSULTANT

AECOM Limited
3 Rivergate
Bristol, BS1 6EW
www.aecom.com

LEGEND

- DCO Site Boundary
- Main Site
- Interconnecting Areas
- 1km Buffer of DCO Site Boundary
- Listed Building - Grade I
- Listed Building - Grade II*
- Listed Building - Grade II
- Record of Scheduled Monument
- Conservation Area
- Watercourse
- Surface Water - Area
- Flood Zone 2
- Flood Zone 3

NOTES

© Crown copyright and database rights 2025
Ordnance Survey AC0000808122.
© Historic England and Local Planning
Authorities 2025. Contains Ordnance Survey
data © Crown copyright and database right
2025. Released under OGL.
© Crown Copyright 2025. Contains Ordnance
Survey data © Crown copyright and database
right 2025. Released under OGL.
Contains OS data © Crown copyright and
database right 2025.
© Environment Agency copyright and/or
database right 2025. All rights reserved.

ISSUE PURPOSE

Scoping Report

PROJECT NUMBER

60716220

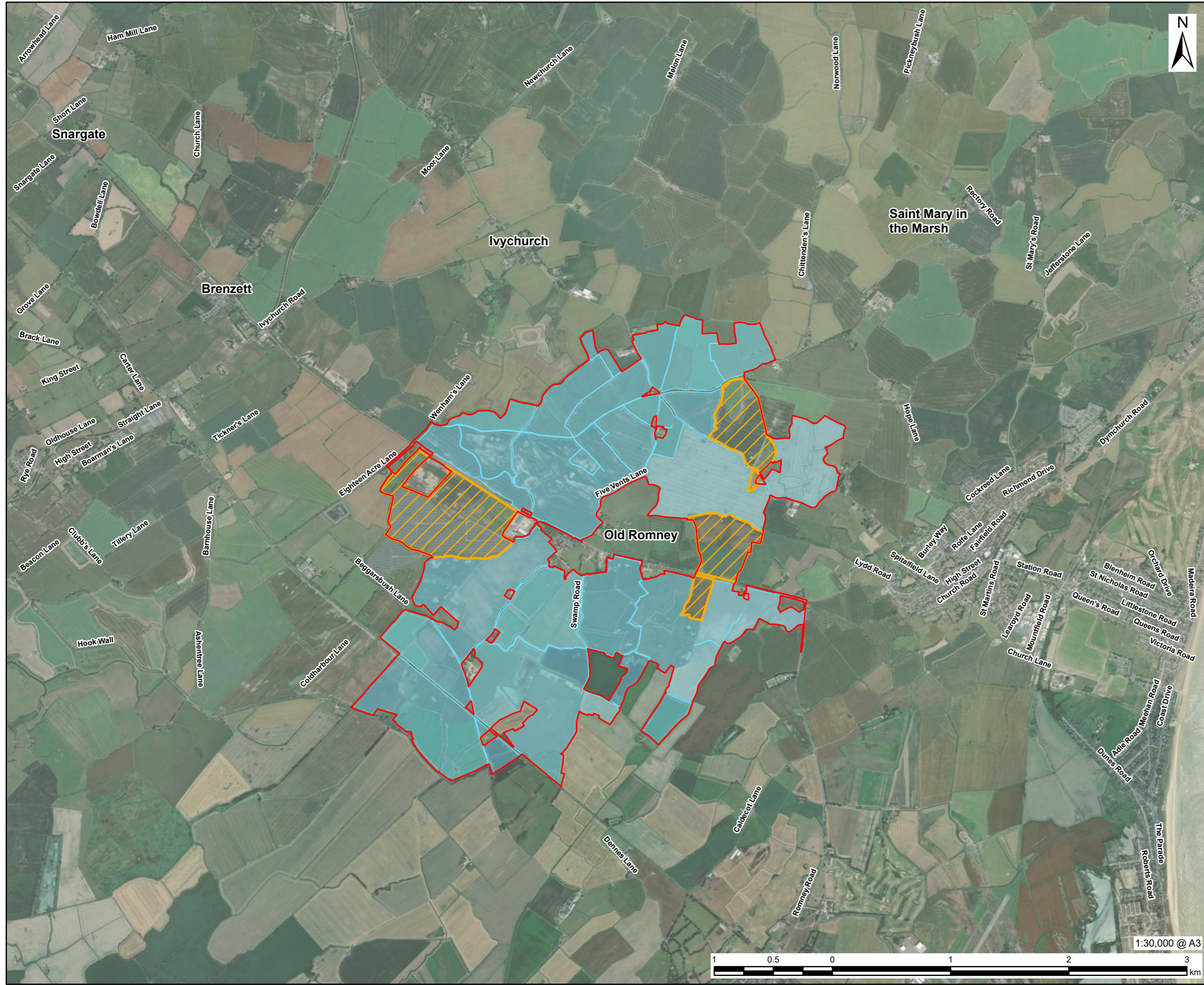
FIGURE TITLE

Environmental Constraints
Sheet 2 of 2

FIGURE NUMBER

Figure 2-1

This drawing has been prepared for the use of AECOM's client. It may not be used, modified, reproduced or relied upon by third parties, except as agreed by AECOM or as required by law. AECOM accepts no responsibility, and denies any liability whatsoever, to any party that uses or relies on this drawing without AECOM's express written consent. Do not scale this document. All measurements must be obtained from the stated dimensions.



AECOM
 PROJECT

South Kent
 ENERGY PARK
 CLIENT

 powering tomorrow

CONSULTANT
 AECOM Limited
 3 Rivergate
 Bristol, BS1 6EW
 www.aecom.com

LEGEND

- DCO Site Boundary
- Main Site
- Interconnecting Areas

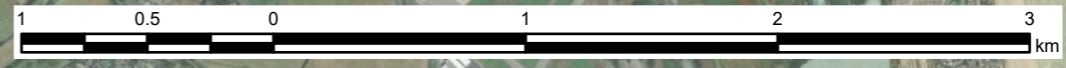
NOTES
 Microsoft, Vantor, Contains OS data © Crown Copyright and database right 2026. Contains data from OS Zoomstack. All rights reserved. Ordnance Survey Licence AC0000808122.

ISSUE PURPOSE
 Scoping Report

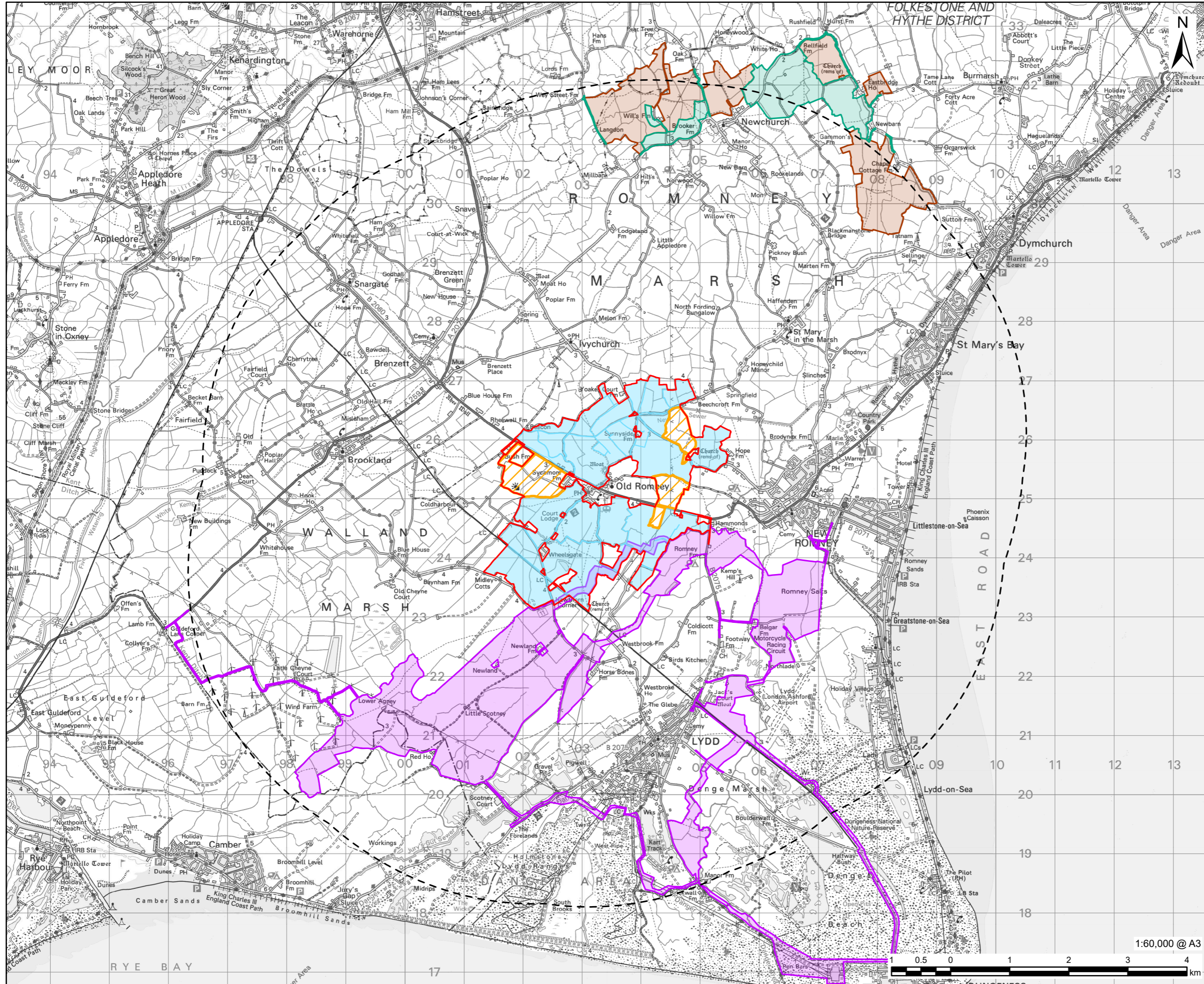
PROJECT NUMBER
 60716220

FIGURE TITLE
 Development Consent Order (DCO) Site Boundary and Land Use

FIGURE NUMBER
 Figure 3-1



This drawing has been prepared for the use of AECOM's client. It may not be used, modified, reproduced or relied upon by third parties, except as agreed by AECOM or as required by law. AECOM accepts no responsibility, and denies any liability whatsoever, to any party that uses or relies on this drawing without AECOM's express written consent. Do not scale this document. All measurements must be obtained from the stated dimensions.



PROJECT
South Kent
 ENERGY PARK
CLIENT



CONSULTANT
 AECOM Limited
 3 Rivergate
 Bristol, BS1 6EW
 www.aecom.com

- LEGEND**
- DCO Site Boundary
 - Main Site
 - Interconnecting Areas
 - 5km Buffer of DCO Site Boundary
 - Indicative South Brooks Solar Farm Site Boundary
 - Indicative Shepway Energy Park Boundaries:
 - Energy Park Site Boundary
 - Interconnecting Cable Corridor Search Area

NOTES

© Crown copyright and database rights 2025
 Ordnance Survey AC0000808122.
 South Brooks Solar Farm Digitised by eye based on project consultation website and boundary in public domain https://southbrookssolarfarm.co.uk/wp-content/uploads/2026/05/South-Brooks_Phase-2-Masterplan-Cumulative.pdf.
 Shepway Energy Park Digitised by eye based on Planning Notice EN010135 and boundary in report in public domain https://nspidocuments.planninginspectorate.gov.uk/published-documents/EN010135-000386-SSG_2.6_Illustrative%20Project%20Drawings%20Not%20for%20Approval.pdf.

ISSUE PURPOSE
 Scoping Report

PROJECT NUMBER
 60716220

FIGURE TITLE
 DCO Solar Projects within 5km of the Proposed Development

FIGURE NUMBER
 Figure 6-1

This drawing has been prepared for the use of AECOM's client. It may not be used, modified, reproduced or relied upon by third parties, except as agreed by AECOM or as required by law. AECOM accepts no responsibility, and denies any liability whatsoever, to any party that uses or relies on this drawing without AECOM's express written consent. Do not scale this document. All measurements must be obtained from the stated dimensions.